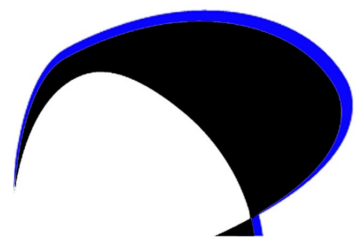


BAYSIDE
POOLS

*Beyond Blue:
Elevate Your Lifestyle*



***Crafted in the Heart
of New Zealand***



Discover Exquisite Craftsmanship: Welcome to Bayside Pools

At Bayside Pools, our pools are meticulously crafted with our customers at the forefront of our minds. This commitment is reflected in our thorough research and development process, ensuring there's a pool to meet every requirement. We prioritize not only the design of pool shapes but also the manufacturing process, assuring our clients of receiving a pool of exceptional quality.

Specializing in high-end fibreglass swimming pools to complement your outdoor living space perfectly.

Facing challenges such as a sloping site or the need for an above-ground pool? Feel free to inquire about our self-supporting swimming pools from our knowledgeable team members!



**Welcome to the epitome of leisure and relaxation
- our exquisite range of swimming pools.
In the realm of home oasis, a swimming pool is not just a luxury; it's
a transformative experience.**

**Picture yourself basking in the sun on a lazy summer afternoon, the
refreshing embrace of crystal-clear waters inviting you for a
rejuvenating dip.**

**Whether you seek a serene sanctuary for unwinding after a long day
or a vibrant hub for creating cherished memories with loved ones, a
swimming pool offers unparalleled versatility and enjoyment.**

**From invigorating morning swims to lively gatherings under the
starlit sky, a pool becomes the centerpiece of your lifestyle,
promoting health, happiness, and a deeper connection to your
surroundings.**

**Dive into a world of endless possibilities with our exquisite pools,
where every splash echoes the joy of living life to the fullest.**

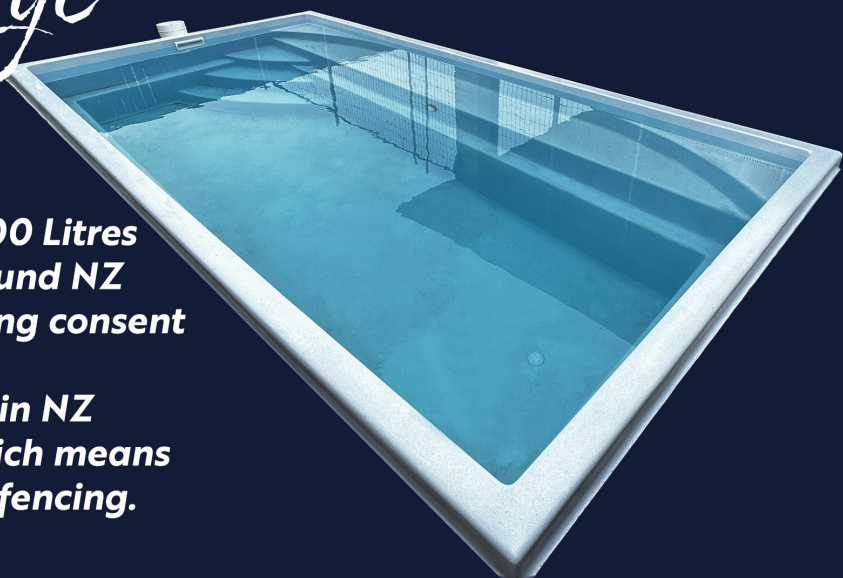




Lagoon Lounge

5.5m x 2.8m

This amazing pool is under 35000 Litres which means most councils around NZ do not require you to have a building consent for the pool, however, any swimming pool installed in NZ still has to comply with F9AS1, which means you need a consent for the pool fencing.



The Lagoon Lounge pool is a great size pool for smaller sections

***There's a safety ledge for you to stand on the side of the pool.
This ledge is set at the same height as the shallow end.***

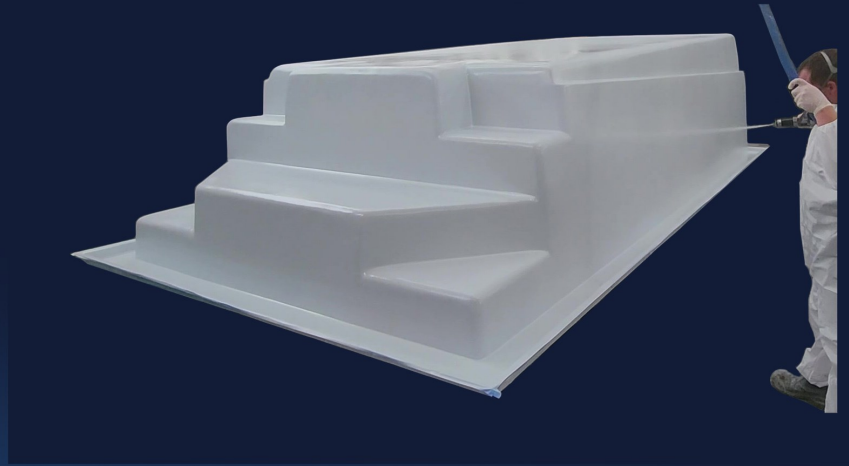
The Lagoon Lounge pool is equipped with two contemporary curved corner steps leading to a bench platform where children can play or adults can unwind.

With a water depth of 1450 mm, it caters to individuals of all ages, offering an ideal experience.

Retreat

6.5m x 3m

Great family-sized pool.



The shallow depth is 1260 and the deep end is an amazing 1760 depth!

**There's a safety ledge for you to stand on the side of the pool.
This ledge is set at the same height as the shallow end.**

**Its capacity of under 35000 Litres typically exempts it from council building consent in most areas of New Zealand.
However, please note that all pools in NZ must adhere to F9AS1 regulations, necessitating consent for pool fencing installation**





Cove

7m x 3.5m

***Amaze your friends and neighbors with our remarkable pool design!
It boasts a unique first step,
perfect for lounging before your refreshing swim.
To optimize swimming space, there are no seats in the deep end,
ensuring ample room for aquatic enjoyment.
Safety is paramount, with a convenient ledge set at the
shallow end's height for easy standing.***

***With depths ranging from 1260mm to an impressive 1760mm,
this pool offers both versatility and depth for your enjoyment.***

***Moreover, its capacity of under 35000 Litres typically exempts it from
council building consent in most areas of New Zealand. However,
please note that all pools in NZ must adhere to F9AS1 regulations,
necessitating consent for pool fencing installation***





This pool boasts a unique first step, perfect for lounging before your swim, along with two seats at the deep end, ideal for jumping off or simply relaxing.

Additionally, it includes a safety ledge designed with kids in mind. With a shallow depth of 1260 and an impressive 1860 at the deep end, it's a fantastic choice for families seeking a spacious pool for leisure and enjoyment.

Satin
8m x 4m



Self-Cleaning

Let's be honest: everyone would love to have a pool in their backyards, but the thought of cleaning it isn't fun.

When you get a pool, you want to use it, not spend a lot of time keeping it sparkling clean. This is why you should consider a self-cleaning pool system.

This system is completely hands-free and keeps your pool in great shape. Your pool will always remain clean with zero effort on your part.

What Is a Self-Cleaning Pool System?

A self-cleaning pool system is a cleaning technology that automatically removes debris and dirt from a swimming pool.

It's also called an in-floor cleaning system or a smart pool.

It uses cleaning heads situated strategically on the floor of the pool.

When the system gets activated, these cleaning heads pop up to circulate and filter the water, then pop back down when finished.

This process is fully automated, you can even swim while it is running.

How Effective Is a Self-Cleaning Pool System?

When you observe a self-cleaning pool system in action, you might question its efficiency. It operates quietly and requires no pipes or additional gadgets.

So, how effective are these systems?

As with any technology, the proof lies in the data.

First, a self-cleaning pool system meticulously covers 99% of your pool.

Bayside Pools install pop-up cleaners in floor steps and benches, resulting in a more thorough cleaning process compared to other pool cleaning methods.

Second, a self-cleaning system utilizes up to 30% fewer chemicals for pool sanitation.


Instead of using large quantities of chemicals, this system relies on powerful water jets to direct debris towards the drain.

The circulation process remains consistent, including the heating of your pool.

In traditional systems, when water passes through the heat pump and returns to the pool, it remains concentrated at the top layer of the swimming pool, resulting in heat loss.

However, with a Bayside Pool self-cleaning system, water is evenly distributed throughout the pool, reducing heat loss.

Typically, Bayside Pool's self-cleaning system can save 30% on chemical consumption and reduce heating costs by 20 to 30% due to its superior circulation compared to traditional jet and skimmer systems.



The Q360 patented water valve is the heart of the Q360+ cleaning system. The proven track record of this ultra efficient valve delivers maximum flow with minimal noise and water pressure variations making it the performance leader in the industry.

- 💧 Smooth and effective water flow at any pump speed
- 💧 6-port design distributes powerful water to each jet; systematically circulating the complete body of water
- 💧 8-veined Power Turbine for smooth energy transfer
- 💧 Triple traction gear drive directs water flow

New Breakthrough performance jet
Setting new industry standards

Newly engineered Q360 Performance Plus™ cleaning jets feature a nozzle which improves cleaning like never before.

- 💧 Enhanced cleaning performance
- 💧 3 selectable nozzle designs for customized cleaning options
- 💧 Exclusive Hybrid advancement mechanism provides 360° cleaning

Production

Our materials are procured from various locations across New Zealand, ensuring top-notch quality for your pool.

Quality is paramount throughout the manufacturing process, starting with our meticulous attention to the quality of our moulds.

Our skilled fibreglass technicians devote extensive time to ensure the moulds are in pristine condition, guaranteeing a flawless finish for your pool.

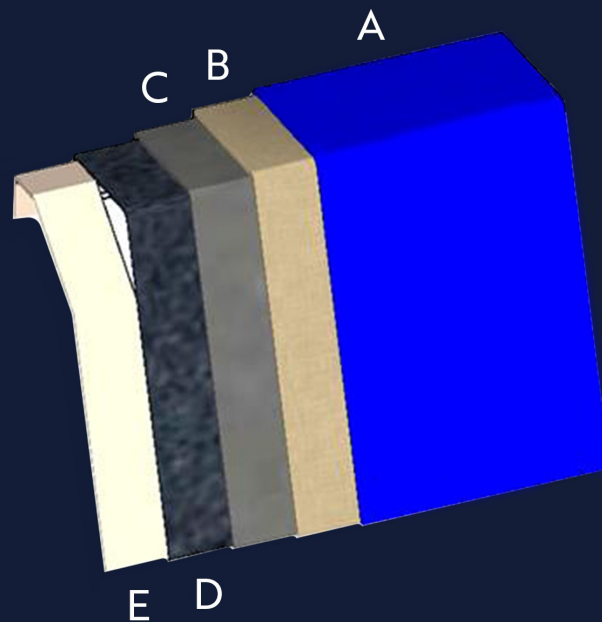


The final pool shell emerges with a stunning glossy sheen, prepared for trimming, transportation, and installation in your backyard.



Unveiling the Layers:

Inside Fibreglass Pool Fabrication



A. Composite Layer

We use a high quality gelcoat formula that is specifically designed for swimming pools, so your pool will still look amazing for you and your family for years to come.

B. Composite Barrier

This is the most important layer, not only does this barrier provide waterproofing, it also protects your pool from osmotic blisters.

We use a high quality vinyl ester resin. This is applied with the fibreglass chopper gun. We also do not use any pigment in this layer, so any air bubbles in this layer can be identified and removed.

C. Structural Layer

This is the first layer of fibreglass that has been applied with the strength of your pool in mind. This layer is the beginning of our 3-step design to make sure your pool has an incredibly high tensile strength and rigidity, but still retain enough flexibility for ground conditions changing

D. Structural Components

In step 2 we hand laminate woven roving in strategic places in your pool, as well as install supports for the final layer to go over and create unique shapes to strengthen your pool.

E. Outer Surface Layer

In the third step, we use white waxed resin to form a barrier that protects your pool from the outside. This formula is applied to seal any exposed fibres and give your pool protection on

Crafting Resilient Pools: Our Commitment to Quality and Durability

Our pools are crafted with a focus on strength and longevity, ensuring they withstand the passage of time. Achieving this involves using only the finest resins in a carefully controlled setting. Additionally, we integrate reinforcement elements throughout the pool shell, enhancing rigidity while allowing flexibility to accommodate varying ground conditions.

Local Ownership, Global Quality: Bayside Pools' Commitment to New Zealand

Bayside Pools is a company entirely owned and operated in New Zealand, rooted in family values.

We take immense pride in offering local employment opportunities and providing our clients with an exceptional product made right here in New Zealand.

Going Green with Fiberglass: The Environmental Benefits of Bayside Pools

Opting for a fiberglass pool reflects an environmentally conscious decision. These pools are ideal for individuals prioritizing sustainability, thanks to their non-porous surfaces requiring fewer chemical treatments. Choosing a Bayside Pool further minimizes carbon emissions, as they are manufactured locally, reducing the need for global transportation. Moreover, fiberglass pools eliminate the need for re-plastering and liner replacements, contributing to reduced waste in landfills.

Choose Bayside Pools for an eco-friendly, locally crafted pool experience built on durability, quality, and community values.

